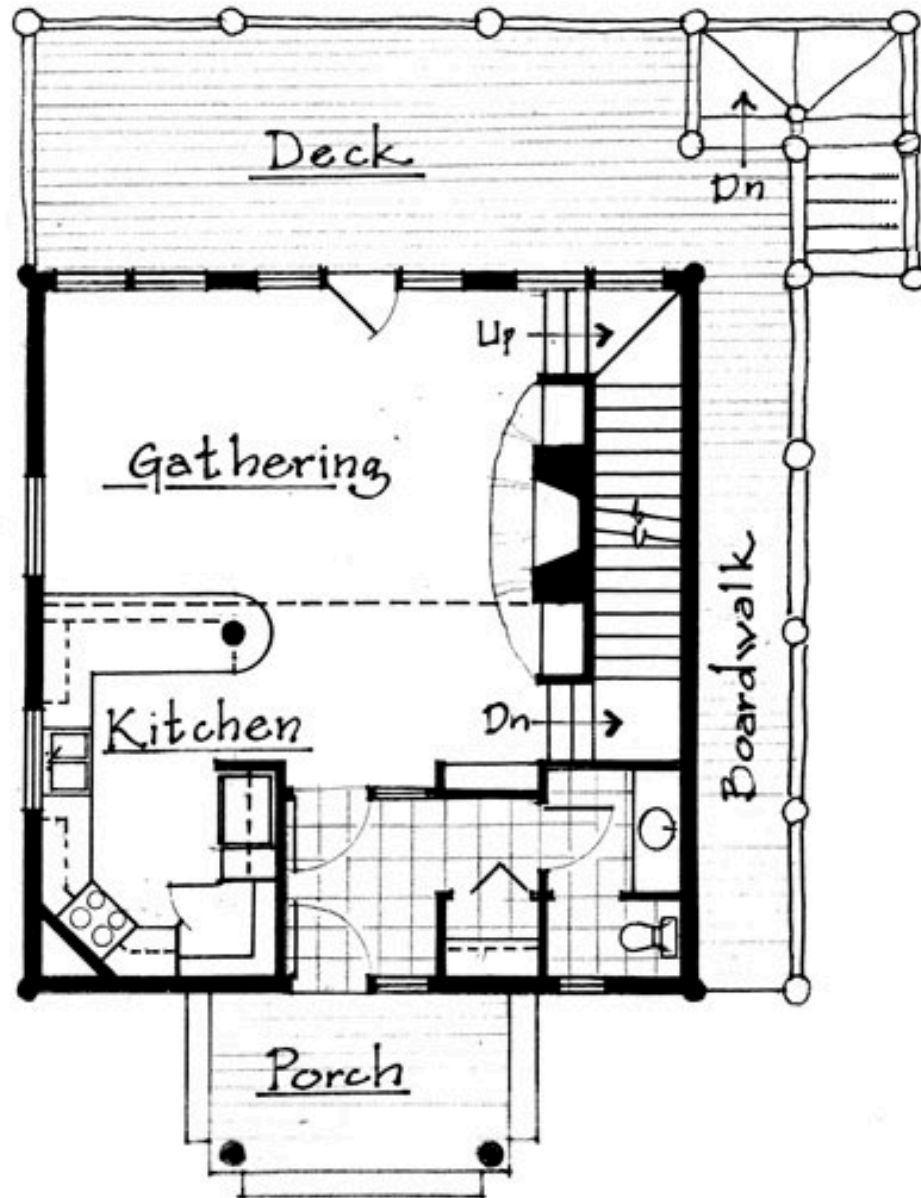


# TIN CUP FLOOR PLANS

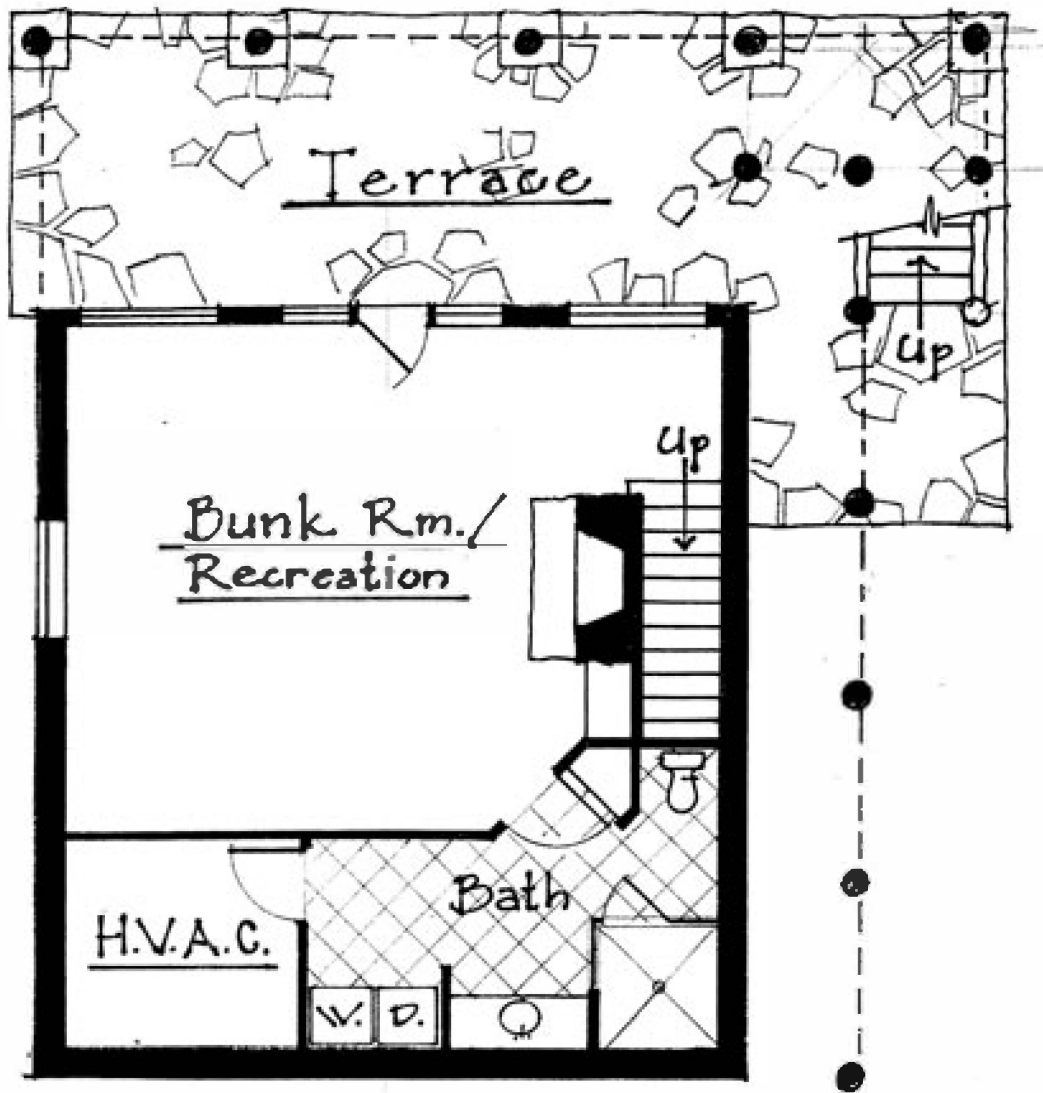


**MAIN LEVEL**

728 S.F.

©2019 BRIGGS ARCHITECTURE + DESIGN, INC.

**B/A** BRIGGS  
ARCHITECTURE

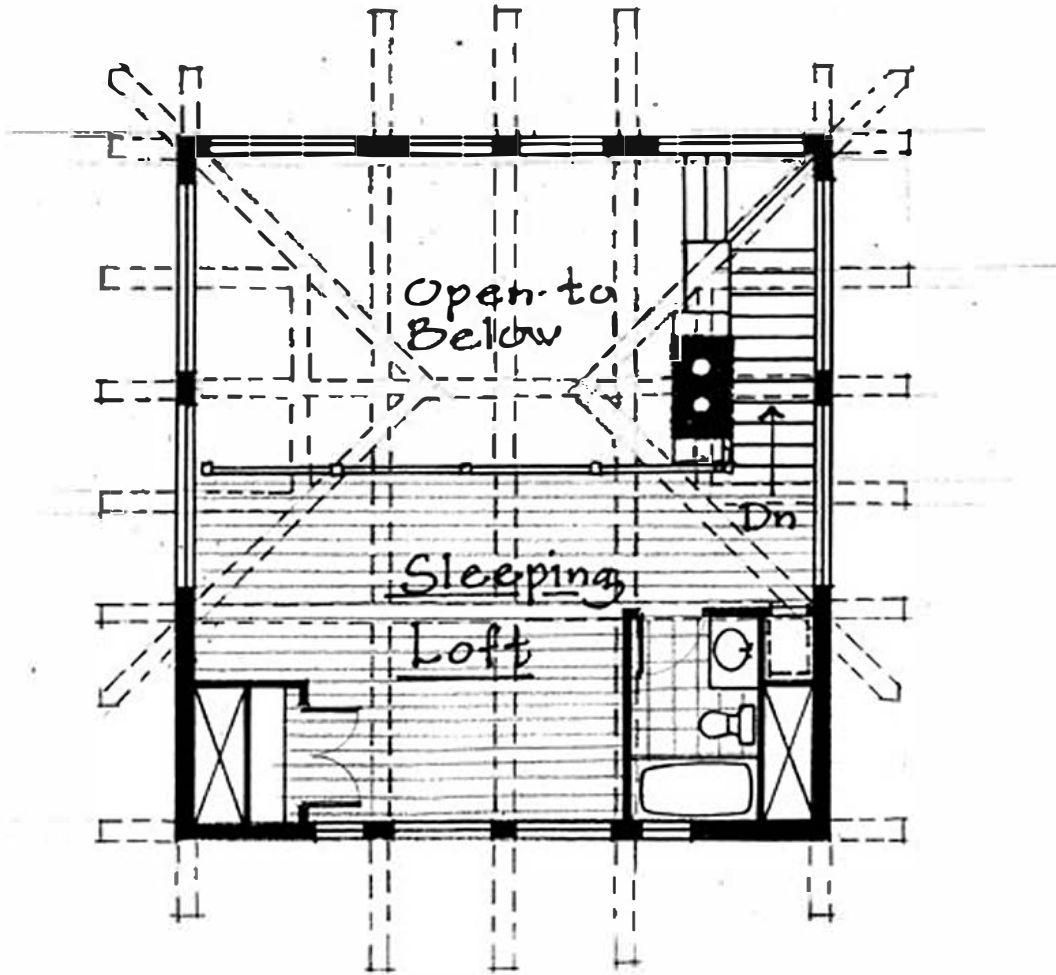


# LOWER LEVEL

728 S.F.

©2010 BRIGGS ARCHITECTURE + DESIGN, INC

**B/A** BRIGGS  
ARCHITECTURE



# LOFT LEVEL

390 S.F.

©2019 BRIGGS ARCHITECTURE + DESIGN, INC.